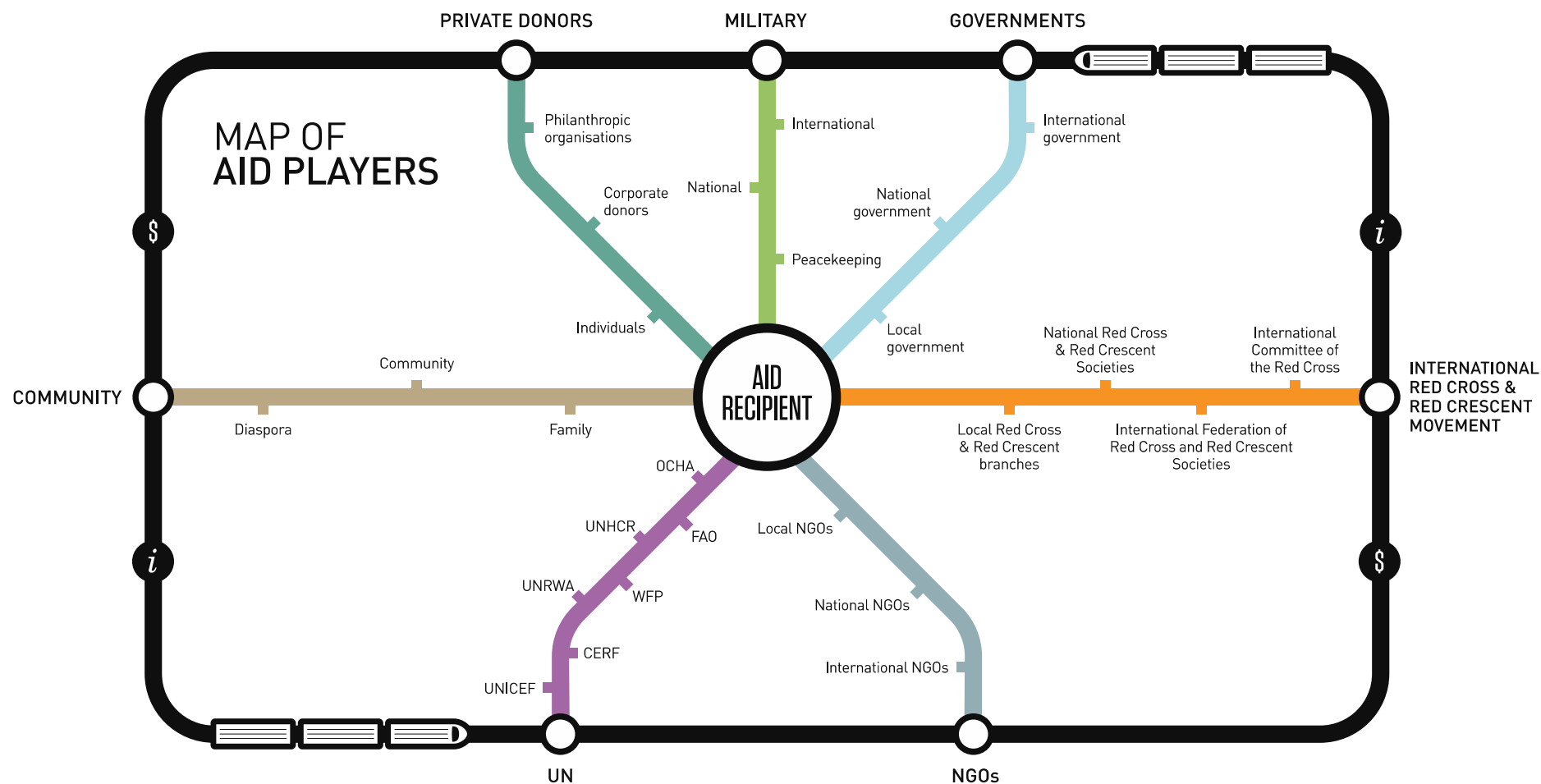




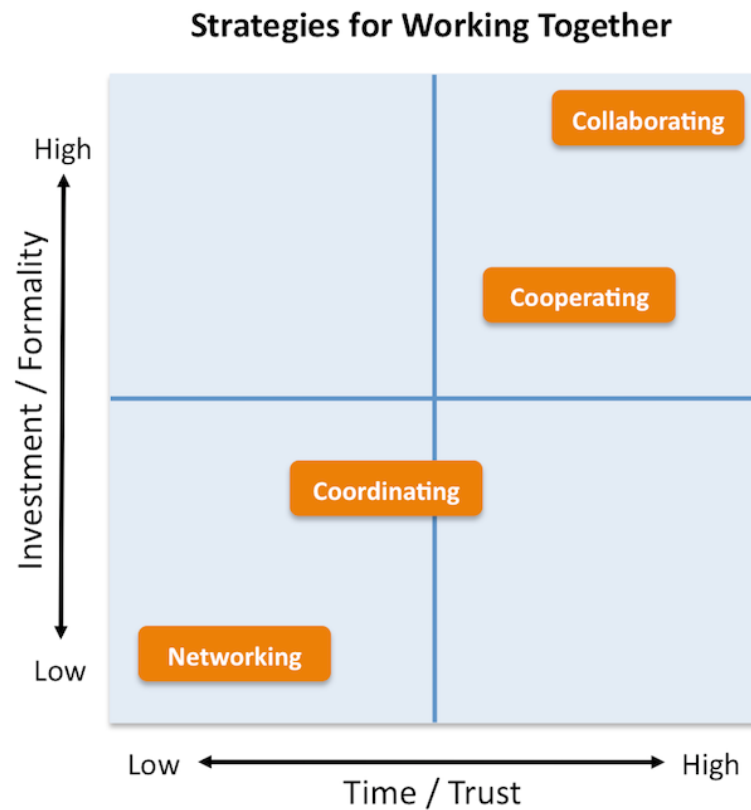
## Module 7: Coordination

*20 May 2014*

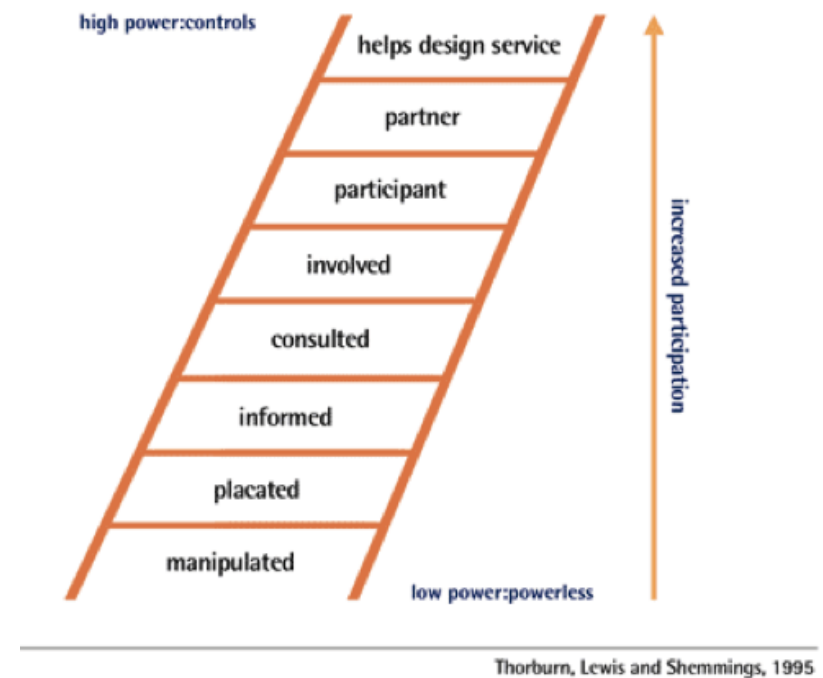
# Humanitarian Aid Network – Actors and Their Role



# What is coordination?



## The ladder of participation



# Why Coordination?

**Generate more value**

**Reduce cost**

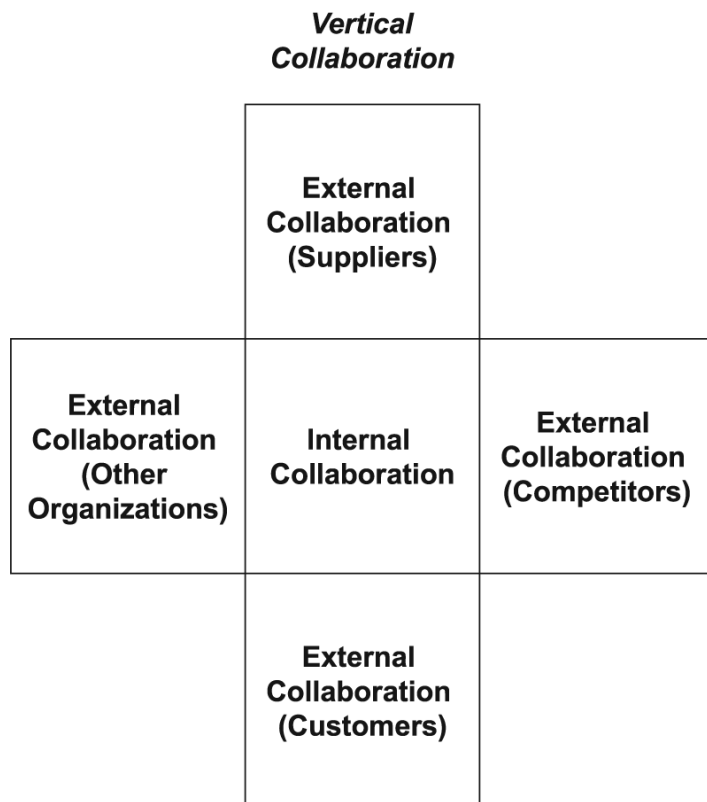
**Understand the other party**

**Source of information**

**Ensure optimal joint result**

**Supply Chain Management: Active management of supply chain activities and relationships to maximise customer value and achieve a sustainable competitive advantage.**

# Horizontal and vertical collaboration



	Horizontal	Vertical
What to coordinate?	Actors, activities, resources at strategic, tactical and operational levels in information, money and material flows for companies at the 'same' stage in the supply chain  Focus on the companies and their specific tasks	Actors, activities, resources at strategic, tactical and operation levels in information, money and material flows for companies at 'different' stages in the supply chain.  Focus on the customer and synchronisation
Why coordinate?	To achieve economies of scale and to reduce costs for the individual company  To have access to more physical resources, information and competence	To reduce overall supply chain costs but can increase cost for some actors  To improve customer services through smoother flows

**Horizontal Collaboration**





## Module 7: Main coordination mechanisms

*20 May 2014*

# Humanitarian reform

## Independent Humanitarian Response Review (August 2005)

### Review Findings

- Gaps
- Limited Linkages
- Erratic coordination
- Insufficient accountability
- Inconsistent donor policies

### Changing Environment

- Proliferation of actors
- Changing role of UN
- Competitive funding
- Increased public scrutiny
- New humanitarian actors

**IASC**

Inter-Agency  
Standing Committee

to improve the effectiveness  
of humanitarian response by  
ensuring greater  
predictability, accountability  
and partnerships

## Humanitarian Reform Process (September 2005)

# The Inter-Agency Standing Committee

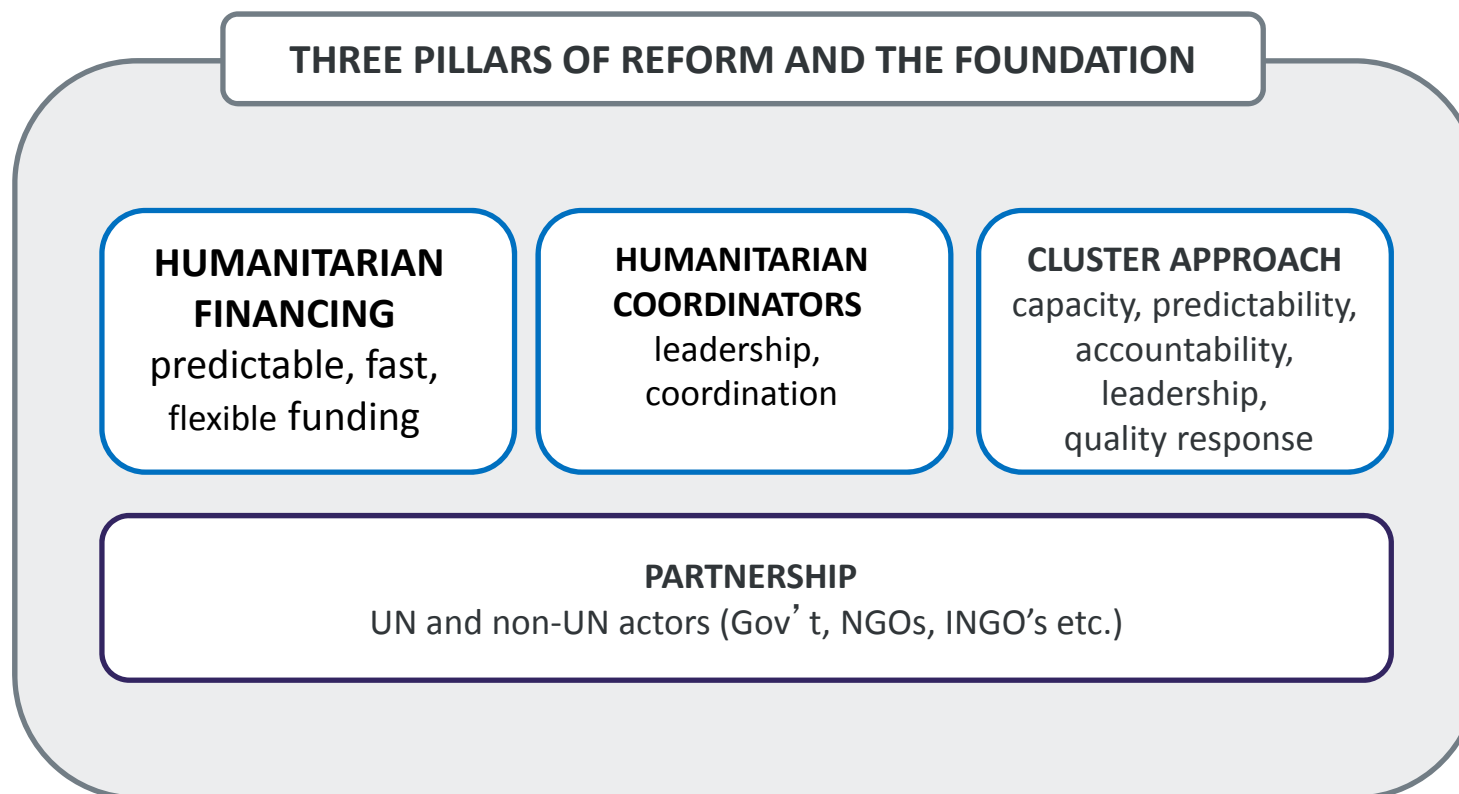
inter-agency forum for coordination, policy  
development and decision-making

## IASC Inter-Agency Standing Committee

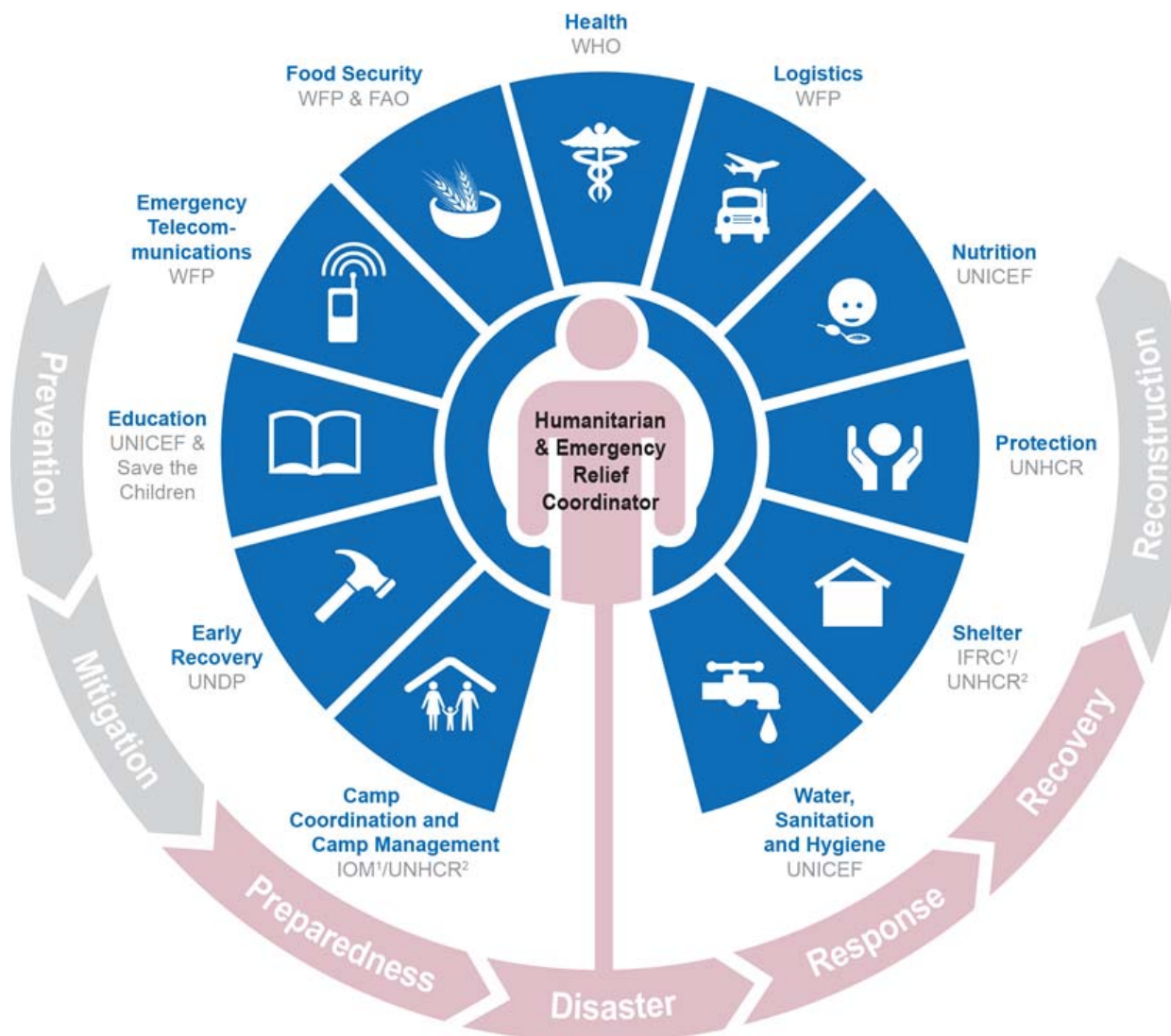




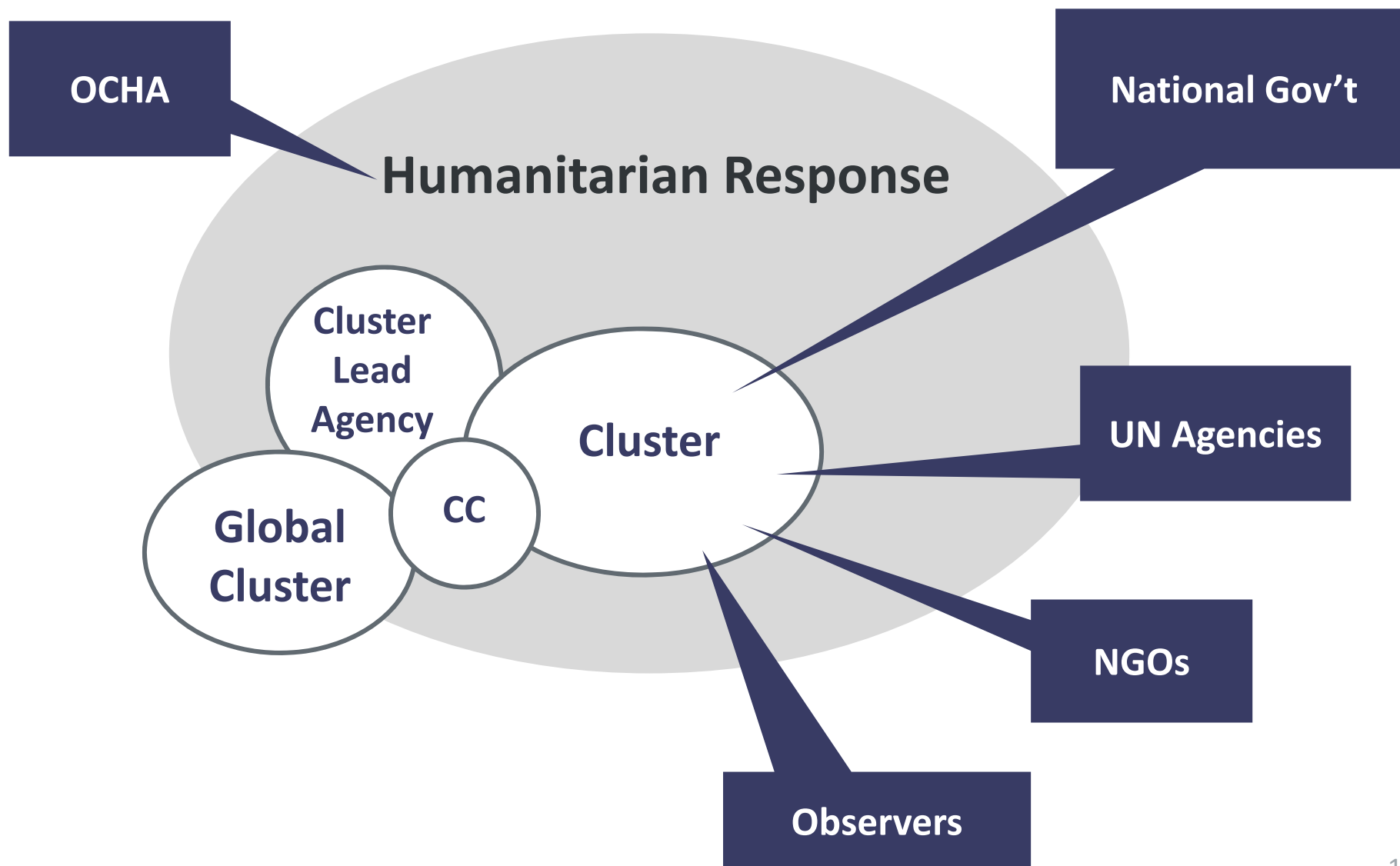
# Humanitarian Reform

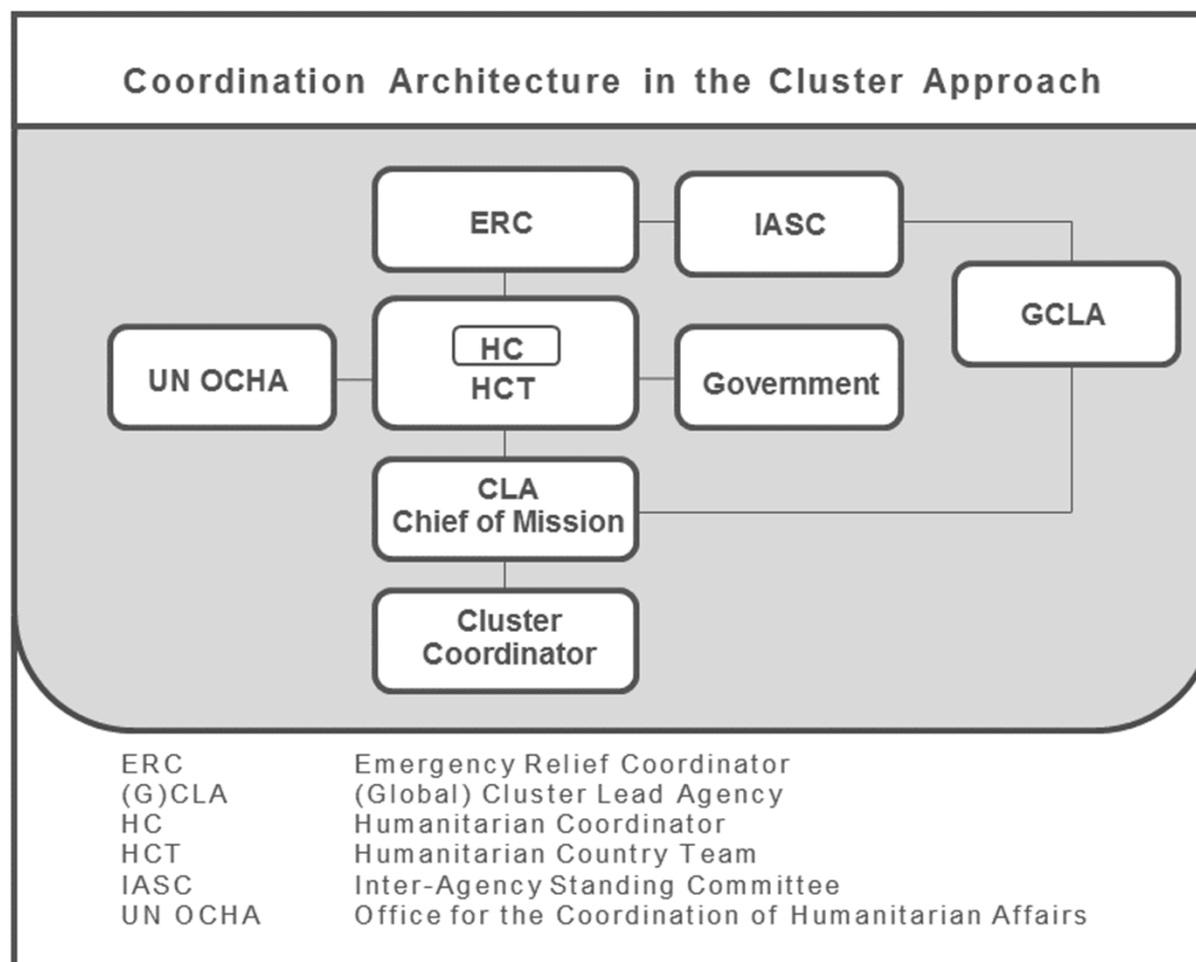


# The Cluster Approach

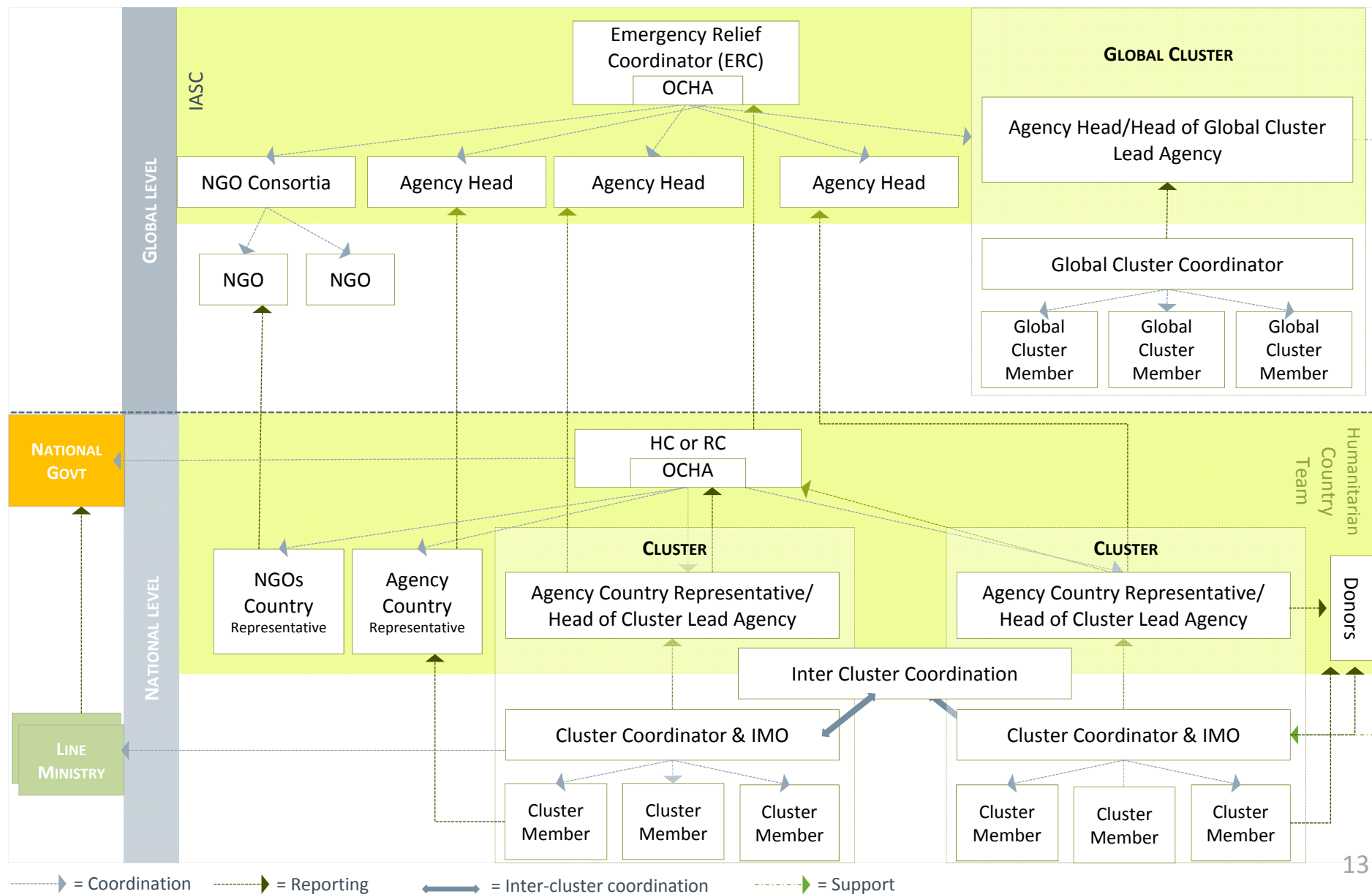


## Actors involved in Clusters





# Humanitarian Coordination Structure



## Coordination responsibilities OCHA

- Inter-cluster coordination
- Information management
- Advocacy and Resource Mobilization
- Policy guidance, Dissemination and Training



# Guiding Principles

## International humanitarian and human right law & humanitarian principles

1. Humanity
2. Impartiality
3. Neutrality
4. Independence

## Principles of Partnership



**Now... lets try to recall what we have been talking about today.....**

## Question # 1

At country-level...the primary responsibility for coordinating humanitarian assistance rests with \_\_\_\_\_:

**A.** the RC

**B.** the HC

**C.** OCHA

**D.** None of the above

## Question # 2

Which of the following is not a primary task of the ERC?

- A.** Humanitarian policy development and coordination
- B.** Advocacy of humanitarian issues and provision of guidance and direction to RCs
- C.** Setting up zonal clusters as needed
- D.** Coordination of international humanitarian response.

## Question # 3

The objectives of the cluster approach include which of the following:

- A.** to ensure effective coordination of early recovery assistance
- B.** to enhance response predictability
- C.** to enhance response partnerships
- D.** All of the above

## Question # 4

Standard operating procedures for clusters in a complex emergency calls for the immediate establishment of

- A.** Standing working groups
- B.** Temporary working groups
- C.** Steering groups
- D.** None of the above



## Question # 5

Which of the following is NOT a responsibility of a CLA?

- A.** Replacing weak national coordination structures wherever possible
- B.** Representing interests of the sectoral group in discussions with the HC
- C.** Assuring the satisfactory performance of the cluster at zonal level where appropriate
- D.** Being ready to ensure provision of services required to fill critical gaps

## Question # 6

The “Provision of Last Resort” (POLR) function should be activated when which of the following conditions is met:

- A.** The Cluster agrees that there is an important life-threatening gap in the sector response
- B.** One or more of the agreed benchmarks for the sector response as a whole is not being met
- C.** Evidence suggests that a significant proportion of the target population is at risk of dying
- D.** All of the above

## Question # 7

Which of the following is NOT one of the Global Cluster Leads' primary responsibilities?

- A. Ensuring system-wide preparedness
- B. Ensuring coordination with state institutions and local civil society**
- C. Ensuring technical capacity to respond to humanitarian emergencies
- D. Ensuring greater predictability and more effective inter-agency

## Question # 8

The country cluster coordinator is directly accountable to:

- A.** The Resident Coordinator
- B.** The Humanitarian Coordinator
- C.** The Emergency Relief Coordinator
- D.** the Cluster Lead Agency's Country Representative/Director

## Question # 9

The HC is directly accountable to:

- A. The ERC**
- B. The in-country OCHA Support Office**
- C. The Cluster Lead Agency's CR**
- D. The HCT**

## Question # 10

Acc. to the IASC's 2006 Guidance Note On Using The Cluster Approach To Strengthen Humanitarian Response:

At country-level, the \_\_\_\_\_ is responsible for adapting coordination structures over time to reflect the capacities of government structures and the engagement of development partners.

- A. global cluster lead
- B. HC
- C. HCT
- D. HC, in consultation with the HCT**



## Question # 11

The \_\_\_\_\_ is expected to advocate and mobilise for resources for the cluster as a whole.

- A.** host government counterpart
- B.** humanitarian country team
- C.** UN country team
- D.** cluster coordinator

## Question # 12

The cluster approach requires cluster member organisations to be accountable to:

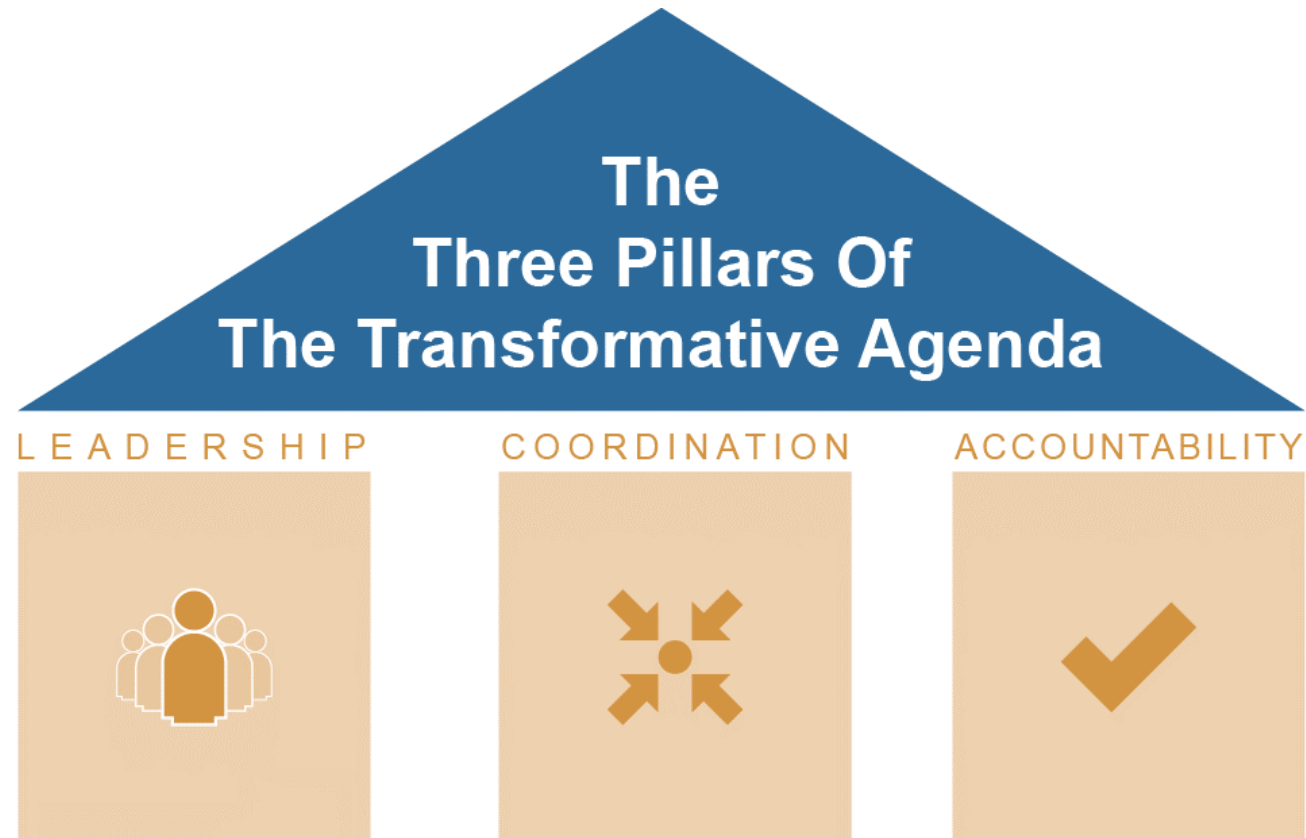
- A.** The cluster coordinator
- B.** The HC
- C.** The cluster lead agency
- D.** None of the above

# Coordination matrix

<div>Type of coordination</div>				Level of coordination
horizontal		vertical		
Within Clusters		Among Clusters		
Operational	Organisations in a cluster cooperate in an operation	Cooperation among different clusters in an operation	Pipeline for an operation is coordinated among participants	
Tactical	Organisations in a cluster cooperate at the regional level	Clusters cooperate at the regional level for storage, capacity	Storage and distribution from a regional level	
Strategic	Global capacity building, standards for a cluster	Global assessments, inter-cluster standards	Purchasing, global stockpiles and pipelines to affected regions	

# Transformative Agenda – Valorie Amos

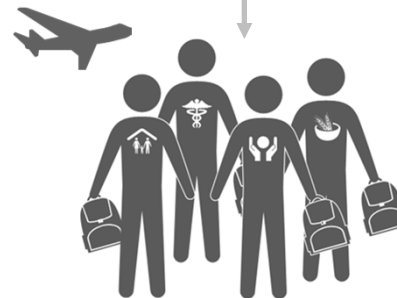
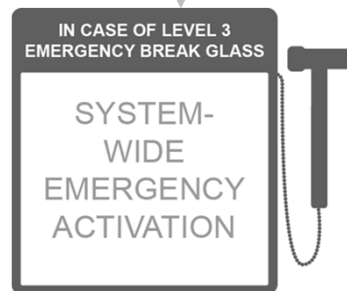
# The three pillars



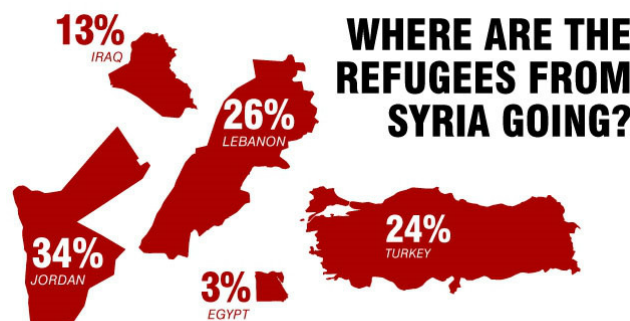
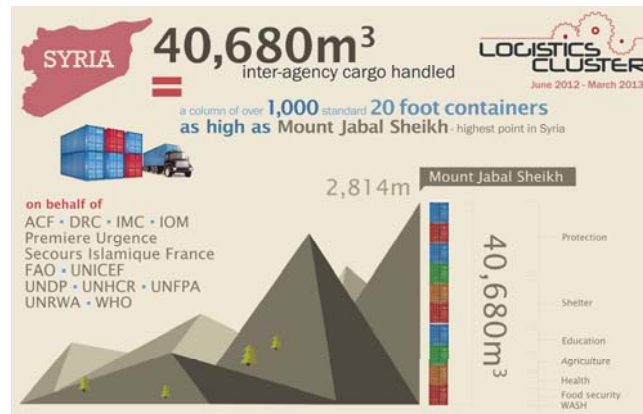
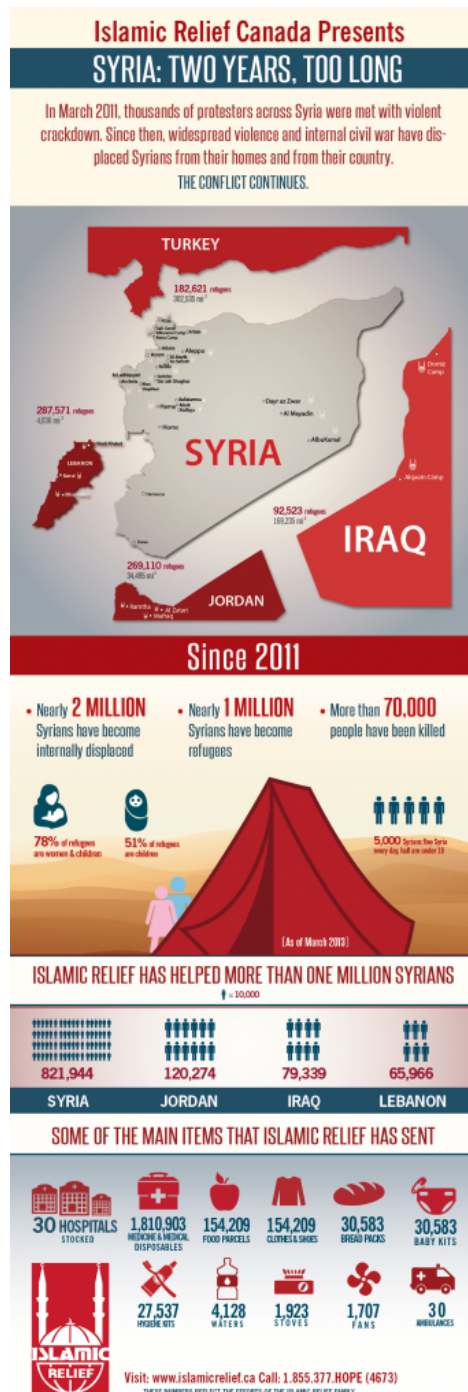
# Level 3 emergencies

*Exceptional in:*

Scale	Complexity	Urgency	Capacity	Reputational Risk
-------	------------	---------	----------	-------------------







SOURCE: UNHCR, the United Nations' refugee agency.

**BBC NEWS MIDDLE EAST**

Home UK Africa Asia Europe Latin America Mid-East US & Canada Business Health SciEnvironm

1 April 2013 Last updated at 21:16 GMT 2.4K Share

**Syria crisis: March was 'conflict's deadliest month'**

A third of those killed during "Bloody March" were civilians, according to the SOHR

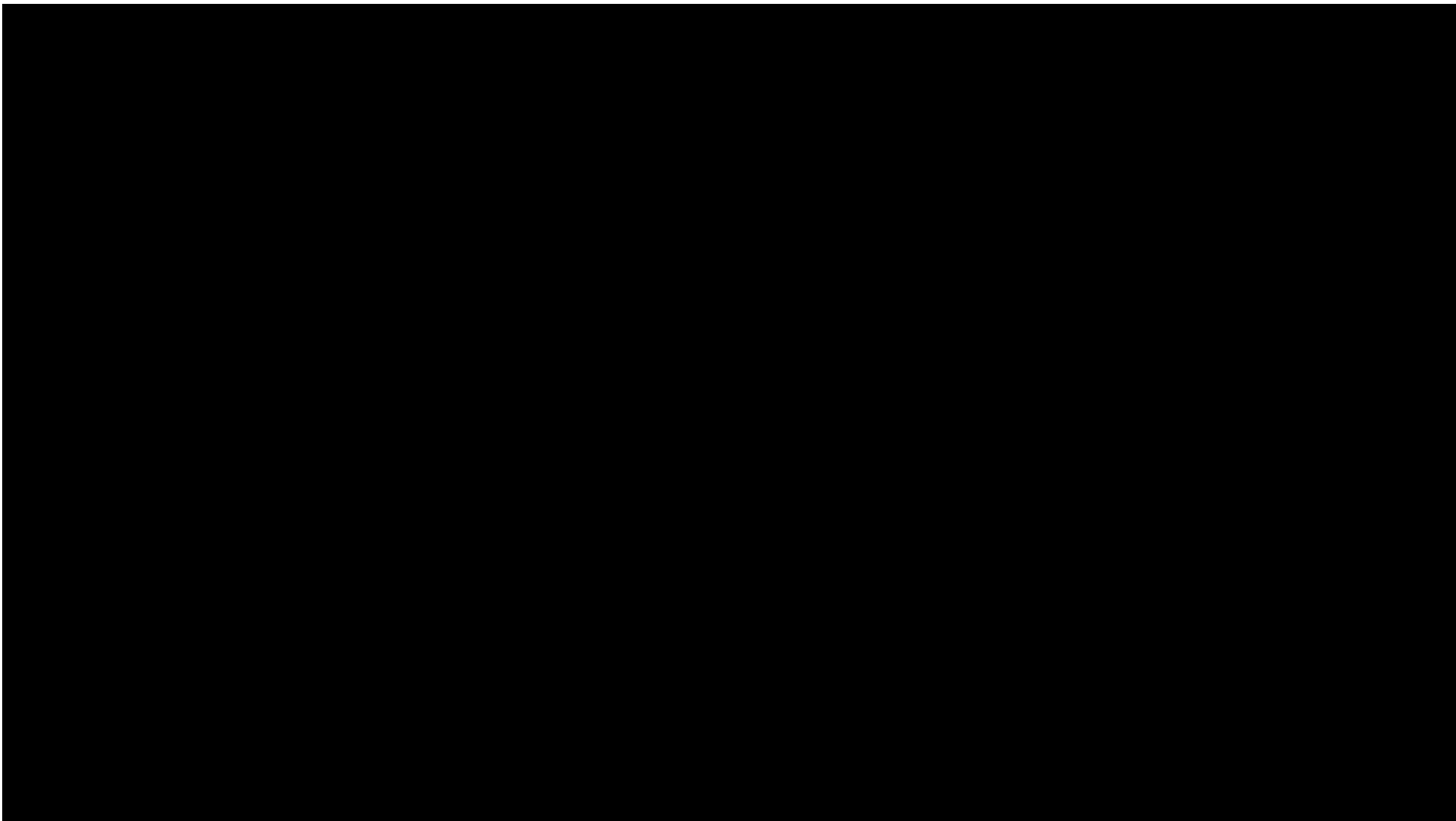
More than 6,000 people died in Syria in March, the deadliest month since protests against the government began two years ago, activists say.

**Syria conflict**



.....as we were debating and discussing potential response protocols - a Level 3 crisis was already gaining momentum in Syria. The Syria uprising began in March 2011 and by the time it was officially declared a Level 3 crisis in January 2013, 60,000 people had been killed, 2 million were displaced internally or had sought refuge in neighbouring countries, and a further 4 million needed urgent humanitarian assistance.

(Senior Director for Humanitarian Policy at InterAction.)



# The Transformative Agenda



# IFRC - Field Assessment Coordination Team (FACT)



## NGO coordination



International  
Council of  
Voluntary  
Agencies







## Module 7: Military Coordination

*20 May 2014*

# Civil Military Coordination





# Civil Military Coordination







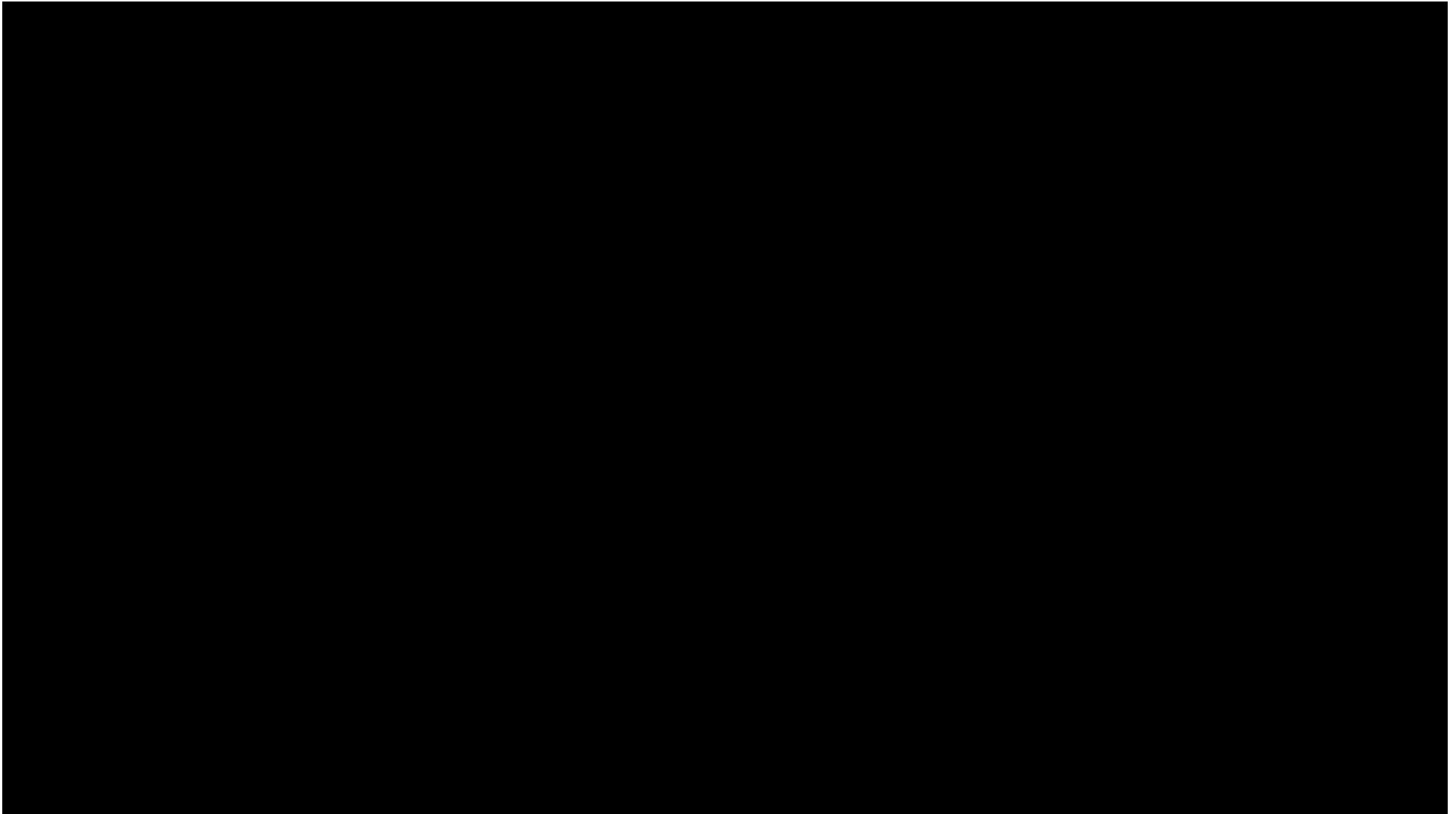
## Module 7: Commercial Sector Coordination

*20 May 2014*

# Logistics Emergency Teams (LET)



## Logistics Emergency Teams (LET)





## Module 7: Philippines

*20 May 2014*



# Philippines



## Legend

	National capital
	First administrative level capital
	Populated place
	International boundary
	First administrative level boundary
ARMM	Autonomous Region in Muslim Mindanao
CAR	Cordillera Administrative Region
Region X	Northern Mindanao

## Elevation (meters)

5,000 and above
4,000 - 5,000
3,000 - 4,000
2,500 - 3,000
2,000 - 2,500
1,500 - 2,000
1,000 - 1,500
800 - 1,000
600 - 800
400 - 600
200 - 400
0 - 200
Below sea level

Disclaimers: The designations employed and the presentation of material on this map do not imply the expression of any opinion whatsoever on the part of the Secretariat of the United Nations concerning the legal status of any country, territory, city or area or of its authorities, or concerning the delimitation of its frontiers or boundaries.  
Map data sources: CGIAR, United Nations Cartographic Section, ESRI, Europa Technologies, FAO, Flanders Marine Institute, GEBCO.



# The Philippines before Haiyan

- Disaster prone
- Role of the Philippines Government
- Coordination structures



www.gov.ph/crisis-response/updates-typhoon-yolanda/

f Hetty Van Doorn H Hetty van Doorn (he... Business Developme... Design and photos

**Alert:** Click here for updates on TYPHOON YOLANDA. (read more).

## Official Gazette



Typhoon Yolanda struck the Philippines on November 8, 2013. It has been called the most powerful storm to make landfall in recorded history. The worst hit provinces were Leyte and Eastern Samar, with a combined population of 2.3 million, and which experienced sustained winds of 270 kph, gusts of up to 312 kph, and a storm surge as high as 7 meters or 21 feet. Presidential [Proclamation No.682, dated November 11, 2013](#), declared a State of National Calamity, affecting Samar, Leyte, Cebu, Iloilo, Capiz, Aklan, and Palawan.

1,526 evacuation centers have been set up, providing temporary shelter to 85,652 families. To date, 33,692 personnel, 1,324 vehicles, 109 seacraft, 162 aircraft, and other assets/equipment from national and local agencies, responders, and volunteer organizations were prepped and deployed to various strategic areas to facilitate and expedite response operations, and [help affected areas return to normalcy](#). Meanwhile, as aid from the international community pours in, a new information portal for international calamity aid and assistance has been created. Access FAiTH, the Foreign Aid Transparency Hub, through [www.gov.ph/faith](http://www.gov.ph/faith).

[Click here for the latest consolidated report on the storm's impact](#), and [here for the latest collated report on the relief effort](#). Those who want to contribute to the relief effort will find [useful information here](#).

1 of 1

**Foreign Aid Transparency Hub (FAiTH)**

The Philippine government's online information portal for international calamity aid and assistance. [Read more.](#)

### Maps

[Google Crisis and Relief Map](#)

[DSWD Disaster Mitigation and Response Situation Map](#)

[DENR GDIS Map](#)

[UN OCHA Map](#)

### Casualties

**Deceased: 5723**

**Injured: 26233**

**Missing: 1779**

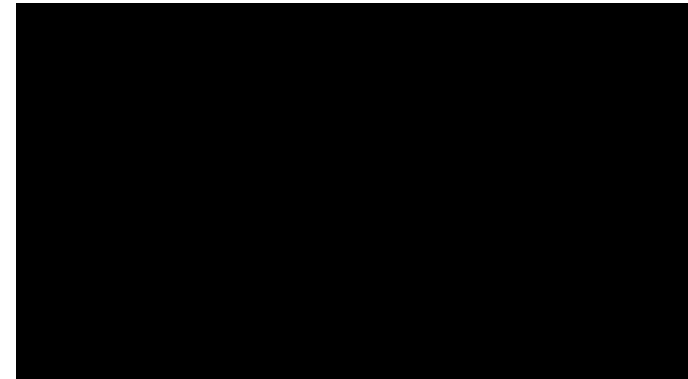
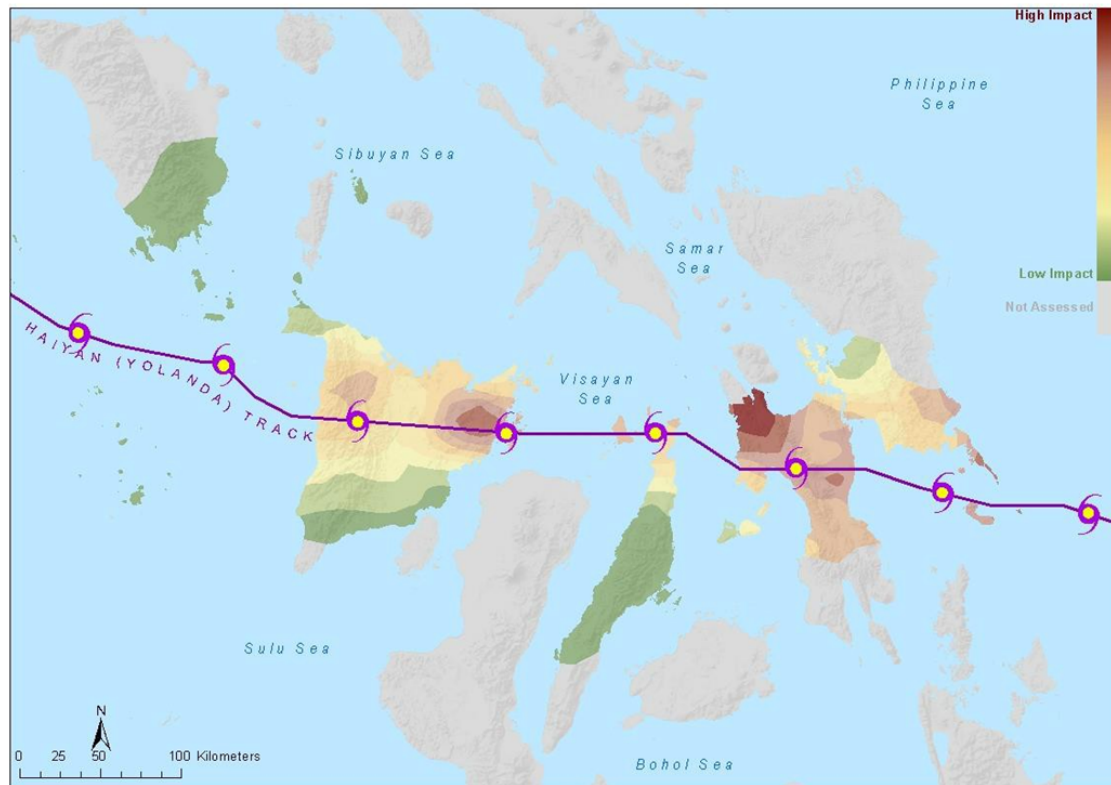
[View report](#)

### Updates

**DILG seeks 'cash-for-**

;-ta....pdf

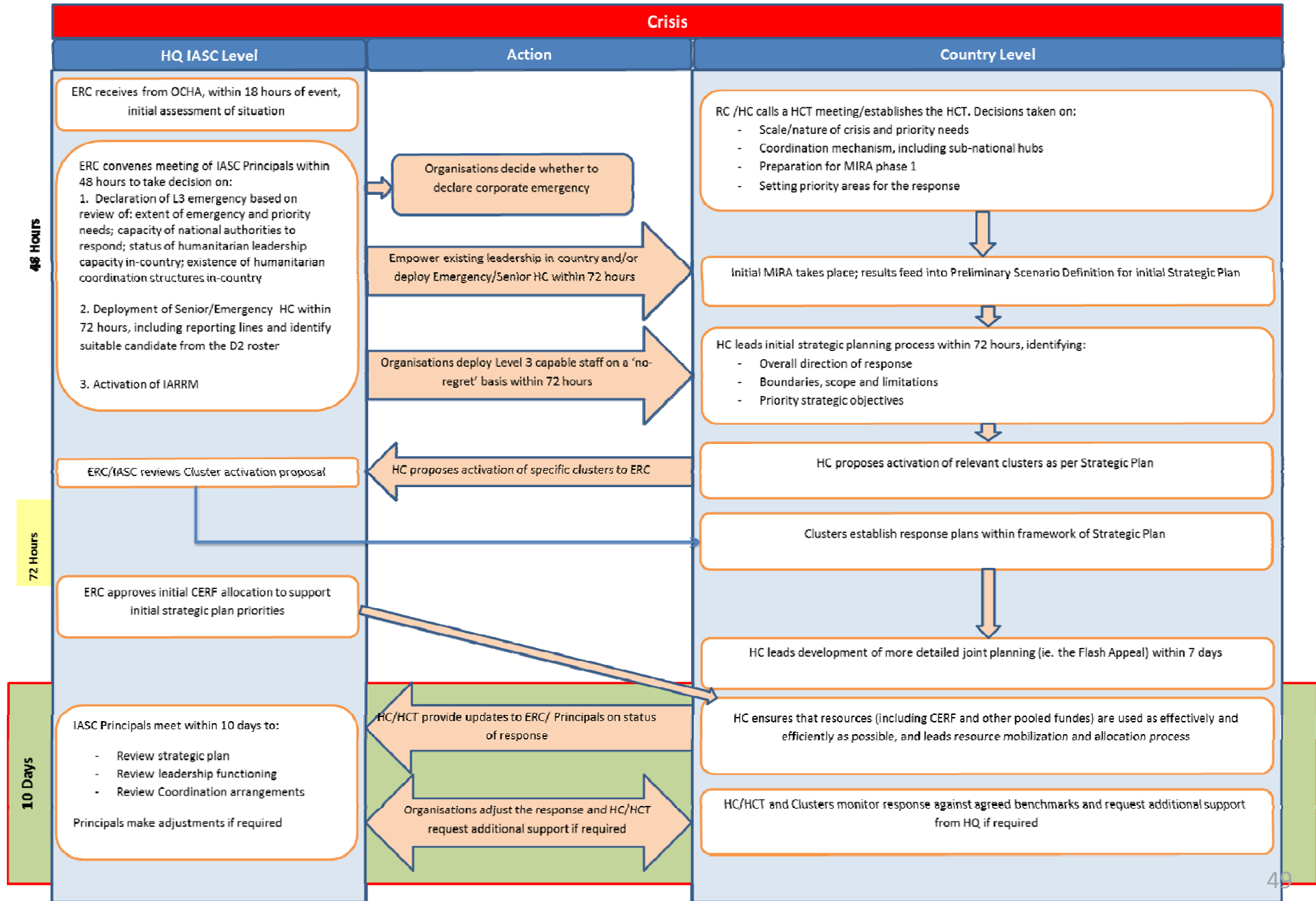
# Haiyan



***A Level three emergency: Humanitarian System-Wide Emergency Activation***



## How the system responds to level 3 emergencies



Final Action Points: LASC Principals ad hoc meeting on the Philippines, 12 November 2013

# INTER-AGENCY STANDING COMMITTEE

## PRINCIPALS AD HOC MEETING ON TYPHOON HAIYAN / THE PHILIPPINES

### Final Action Points

12 November 2013

*Circulated: 14 November 2013*

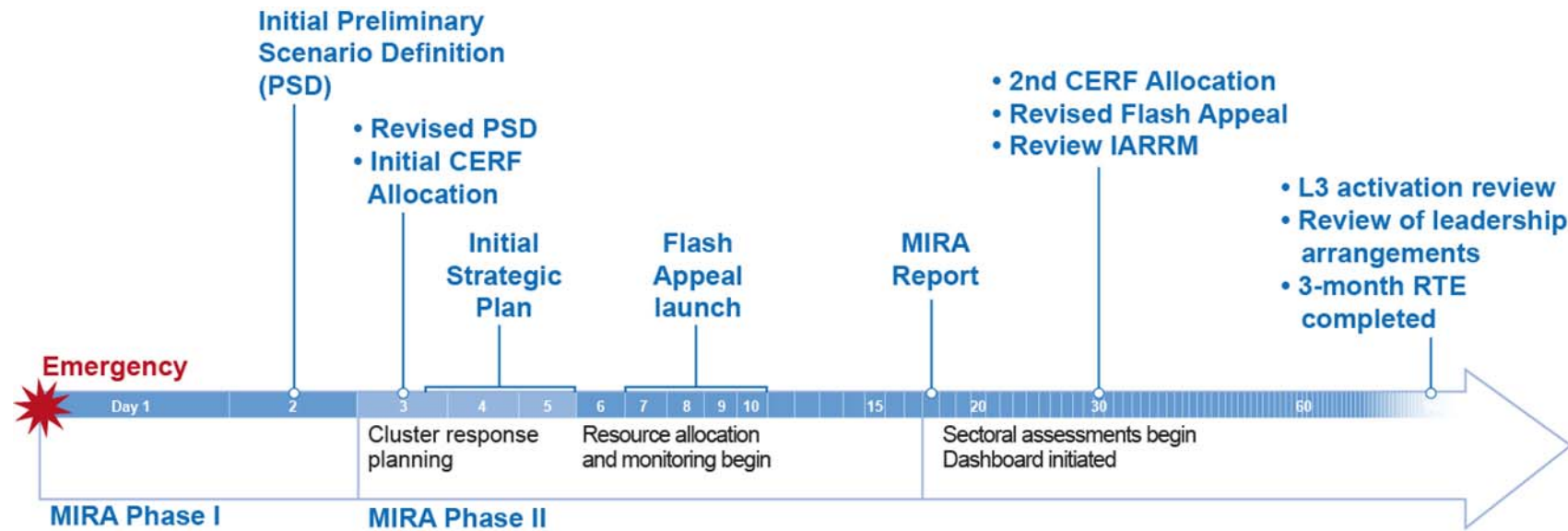
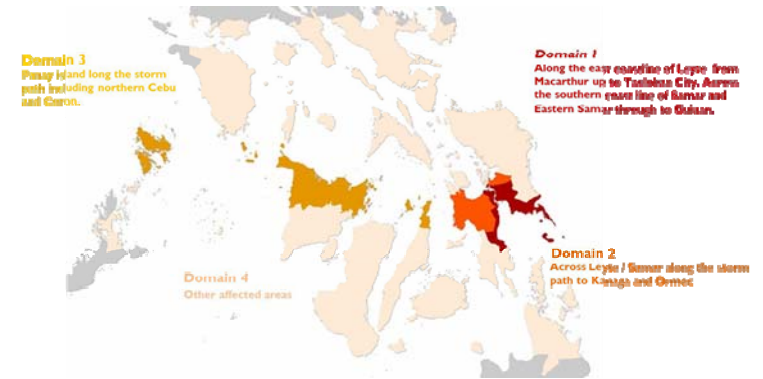
The LASC Principals:

1. *Declared Typhoon Haiyan in the Philippines a system-wide L3 emergency.*
2. *Activated the "empowered leadership" protocol. Action: HC and HCT empowered in accordance with the Transformative Agenda Protocol immediately.*
3. *Confirmed Luiza Carvalho as the Humanitarian Coordinator and decided to deploy a Deputy Humanitarian Coordinator (D-1 level) with the required experience in emergency response, logistics and in working in the region. Action: All Agencies to suggest suitable candidates to OCHA immediately; OCHA to share the HC's CV with LASC organisations.*
4. *Activated the inter-agency rapid response mechanism (IARRM). Action: LASC organisations to coordinate their decision on surge deployments with the HC; OCHA to strengthen its support capacity for joint needs assessment and inter-cluster coordination, and with WFP, civil-military coordination capacity by 19 November.*
5. *Agreed to coordinate information on supplies delivered and in the pipeline. Action: LASC organisations to share detailed information on supplies due to arrive in the Philippines with the HC/HCT and the Tracking Information System; HC to liaise with Government to facilitate entry in the affected regions.*
6. *Decided to issue common messaging on the response. Action: OCHA to circulate draft common messages, LASC organisations to provide input by 13 November.*
7. *Asked the HCT to review the cluster structure with a view to improving capacity and coordination. Action by: HCT and GCC by end of November.*
8. *Decided to meet again in 7 to 10 days to review the situation. Action: The LASC Secretariat to organise before 22 November (date tba).*



- **Multi Cluster/Sector Initial Rapid Assessment**
- **First step in HCT response to an emergency**
- **Aim:**
  - to identify strategic humanitarian priorities in first weeks emergency
  - Basis for joint strategic planning, mobilize resources, monitor situation and response
- **Conducted by multi cluster/sector team, coordinated by OCHA**
- **Preliminary Scenario Definition (72 hrs) – initial flash appeal**
- **MIRA report (after 2 weeks) – final flash appeal**

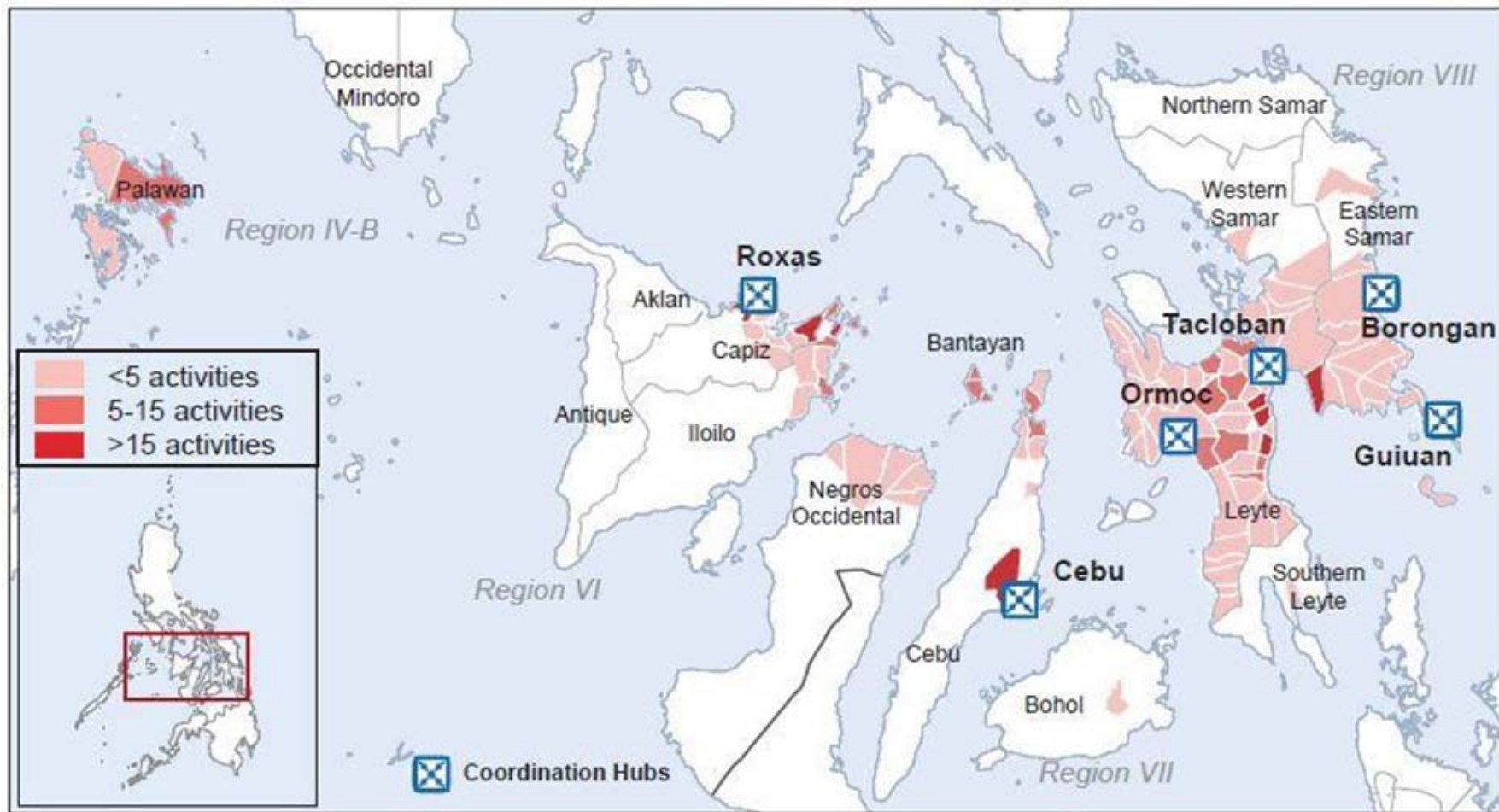
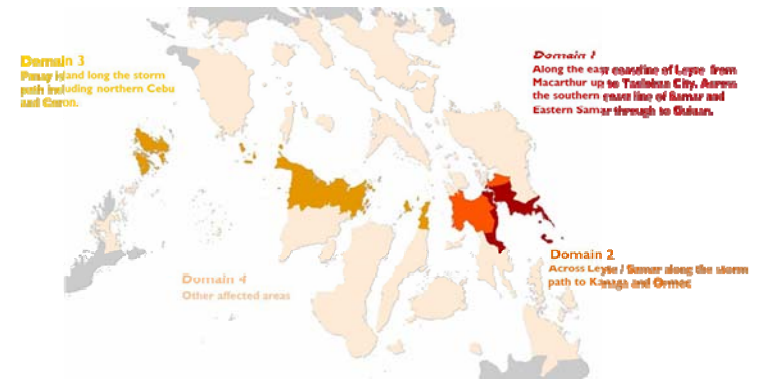
# MIRA



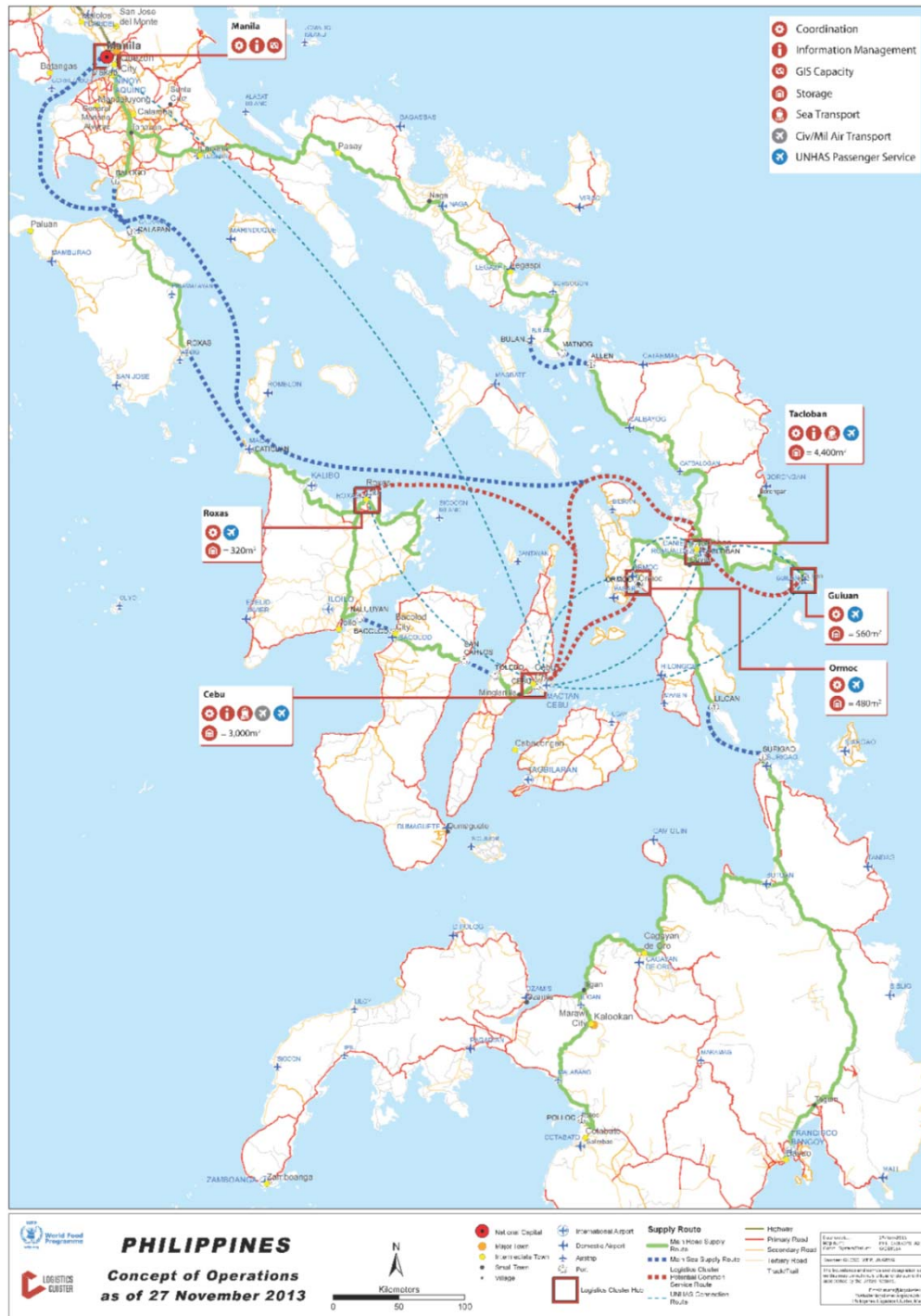
# Organisations, participating in MIRA

1 ACF	23 OCHA
2 ActAlliance	24 OIM
3 ACTED	25 Oxfam
4 Asian Development Bank	26 PCEC
5 British Navy - HMS Daring	27 PDRPMC
6 Canadian Army - DART	28 Plan
7 Canadian Search And Rescue	29 PNP
8 CARE International	30 REACH
9 ChildFund	31 Filipino Red Cross
10 CSRT	32 Save the Children
11 EDRN	33 Shelter Cluster
12 Empact	34 TearFund
13 EUCPT	35 UNCHR
14 FAO	36 UNDP
15 HelpAge	37 UNDSS
16 IFRC	38 UNFPA
17 ILO	39 UNHCR
18 International Health Partners UK	40 UNICEF
19 MapAction	41 Vergabera
20 MEDAIR	42 WFP
21 Mercy Corps	44 WHO
22 NDRPMC	45 World Concern

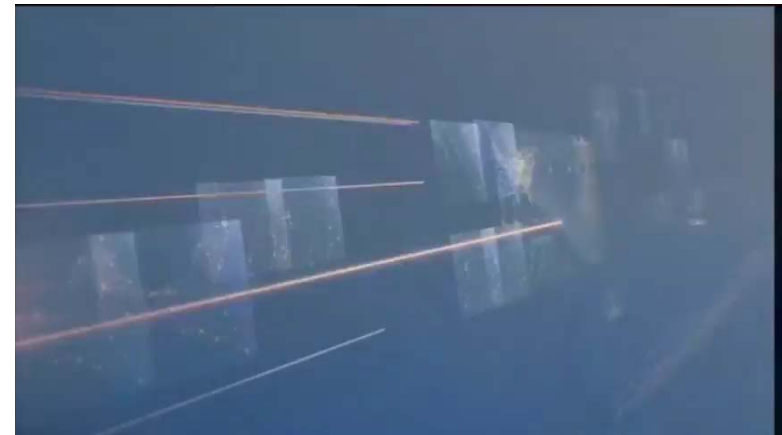
# Coordination hubs

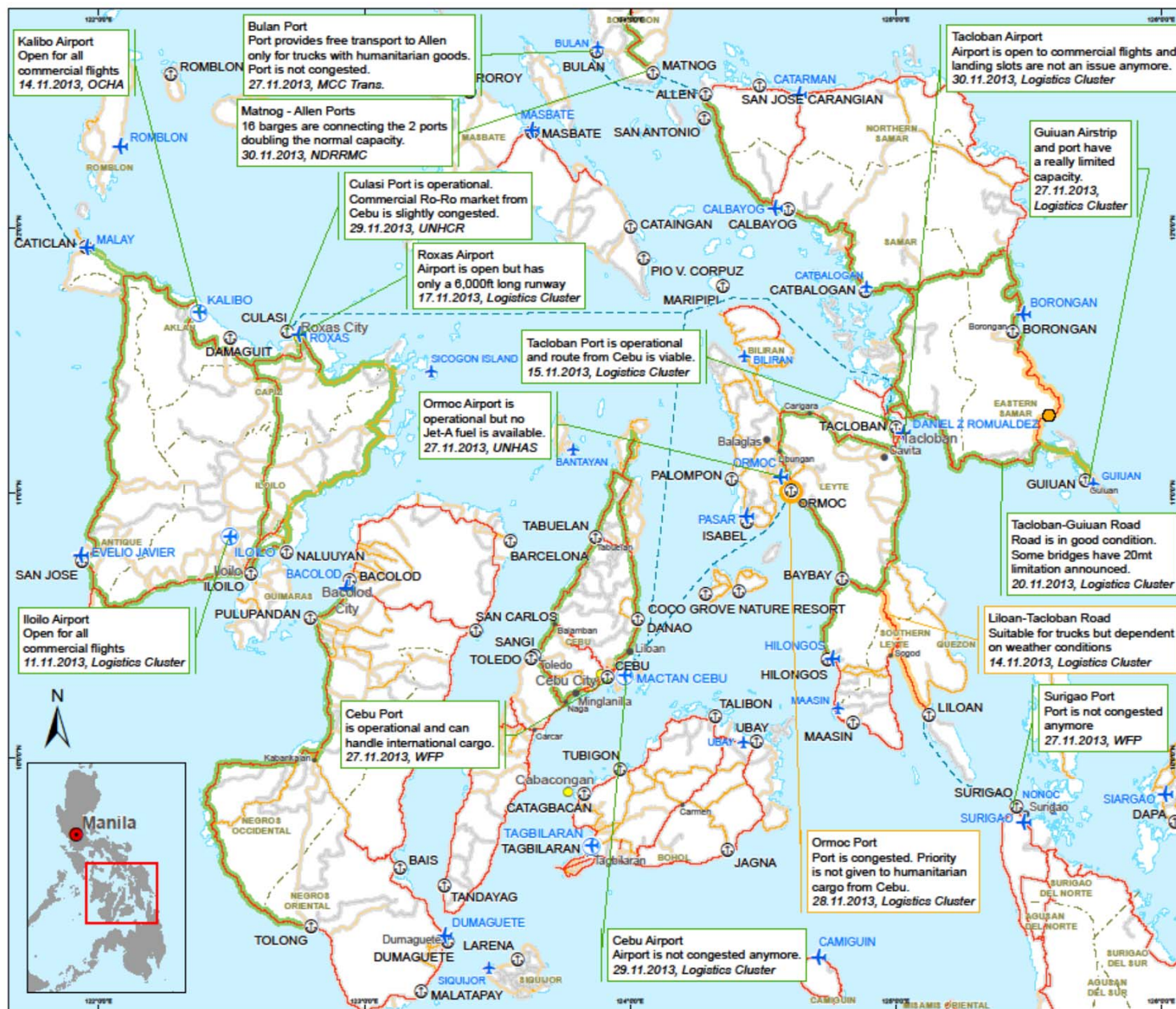






## What are main logistics challenges?





World Food Programme



## PHILIPPINES

### Visayas Access Constraints as of 30 November 2013

0 25 50 100  
Kilometers  
Nominal Scale 1:1,500,000 at A3

- Intermediate Town
- Small Town
- Village
- ✈ International Airport
- ✈ Domestic Airport
- ✈ Airstrip
- ⚓ Port

- First Level Admin Boundary
- Primary road
- Secondary road
- Tertiary road
- Track/Trail

#### Road Practicability

- Passable/Cleared
- Restricted
- Unknown
- Road Damage
- Confirmed Operational Ferry Route

Date Created: 30 - NOV -2013  
Map Num: PHL\_OP\_AccessConstraints\_A3L  
Coord.System/Datum: Geographic/WGS84  
Data Sources: UNGIWG, Geonames, WFP, GLCSC, OSM, NDRRMC

The boundaries and names and the designations used on this map do not imply official endorsement or acceptance by the United Nations.

Email: [maps@logcluster.org](mailto:maps@logcluster.org)  
Website: [www.logcluster.org/ops/phil3](http://www.logcluster.org/ops/phil3)  
Logistics Cluster Philippines, Manila



OPERATION

PHILIPPINES

OPERATION MAP CENTRE

✓ Coordination

✈ Air Transport

🚚 Roads Transport

🚂 Rail Transport

⚓ Sea & Rivers Transport

🏢 Supply Chain

🛂 Customs & Immigration

📡 Infrastructure, Communications

AIR TRANSPORT - CARGO (MILITARY)

Document type: Procedure

Last update: Nov 28, 2013

Source: Logistics Cluster

Themes: Air Transport

Countries: [Philippines](#)

Creation date: Nov 28, 2013

Service Request Form - Instructions

Service Request Form for Military Assets

Standard Operating Procedures for Accessing Military Assets - Manila

Standard Operating Procedures for Accessing Military Assets - Cebu

RITA Customer Guidance

SHARE THIS ON

🐦 Twitter

📘 Facebook

🍷 Delicious

🔗 Digg

✉ Send This

MORE PROCEDURE

Sea Transport and Storage - Cargo

Nov 28, 2013

UNHAS Philippines User Guide

Nov 26, 2013

Standard Operating Procedures for Accessing Military Assets - Cebu

Nov 25, 2013

UNHAS Standard Administrative and Operating Procedures

Nov 22, 2013

Air Transport - Passenger (UNHAS)

Nov 21, 2013

Standard Operating Procedures - Transport and Storage

Nov 21, 2013

57



## Module 7: Coordination

*20 May 2014*